



# Bechwood Close, Tadworth

£1,395,000





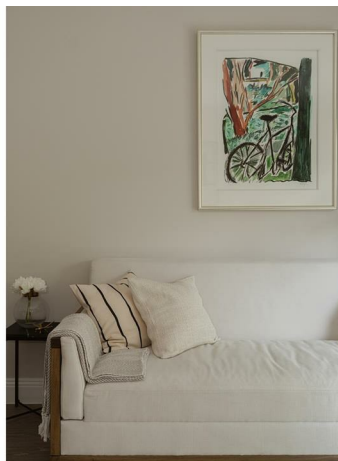


“

A boutique development of 4 and 5 bed detached family homes in one of Surrey's most iconic villages.

”



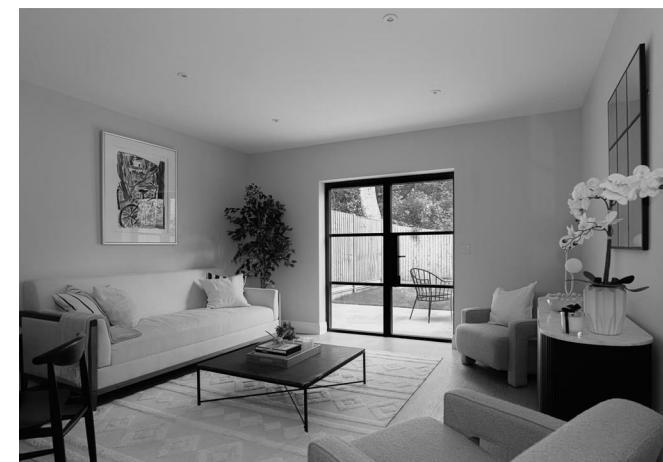


Plot 2 at The Bechwood Collection is an impressive five-bedroom detached family home, thoughtfully designed to offer generous living space and exceptional versatility for modern family life. Set within this exclusive enclave of just four architecturally designed residences in the heart of Box Hill, the home combines refined design with practical functionality.

The home features expansive open-plan living and dining areas, complemented by a contemporary gourmet kitchen finished with premium fittings and high-quality materials. Designed for both everyday living and entertaining, the layout flows seamlessly to a private landscaped garden, creating an inviting indoor-outdoor connection.

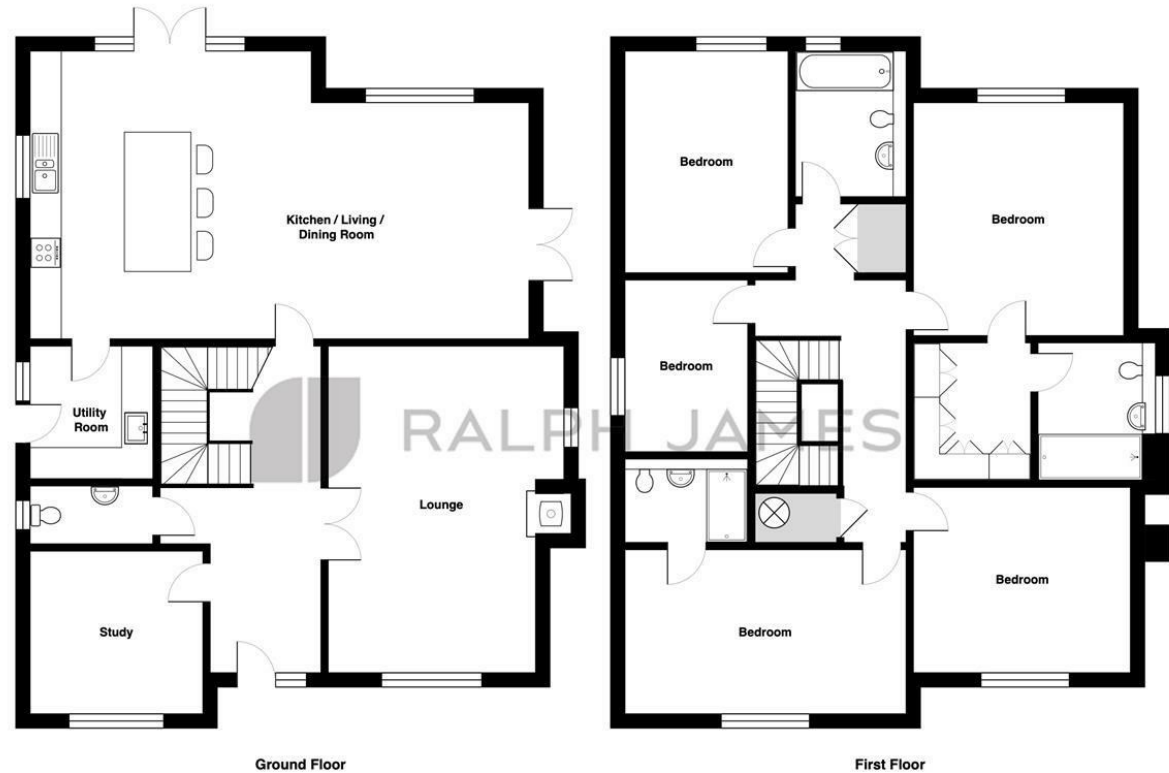
Upstairs, five well-proportioned bedrooms provide flexible accommodation for growing families, guests, or home working, with the principal bedroom benefiting from a luxurious en-suite and fitted storage. Large windows throughout flood the home with natural light, while carefully curated finishes and materials deliver a sense of timeless elegance and lasting quality.

Plot 2 represents a perfect blend of space, comfort, and sophistication — an exceptional family home within a sought-after village setting.



## Need to know

- Five bedrooms
- Detached
- Two reception rooms
- Master en-suite
- Car port



Plot 2 - Bechwood, Boxhill Road, Box Hill

Total Area: 237.0 m<sup>2</sup> ... 2551 ft<sup>2</sup>

FOR ILLUSTRATIVE PURPOSES ONLY.

Whilst every attempt has been made to ensure the accuracy of the floor plan shown, all measurements, positioning, fixtures, features, fittings and any other data shown are an approximate interpretation for illustrative purposes only and are not to scale.

No responsibility is taken for any error, omission, miss-statement or use of data shown.

The above statement applies to both 'Still Moving London LTD' and the Company or individual displaying this floor plan.

Unauthorised reproduction prohibited.

© Still Moving London LTD (www.stillmoving.london)



## Interested?

dorking@ralphjames.co.uk  
01306 284555

#

ralphjames.co.uk